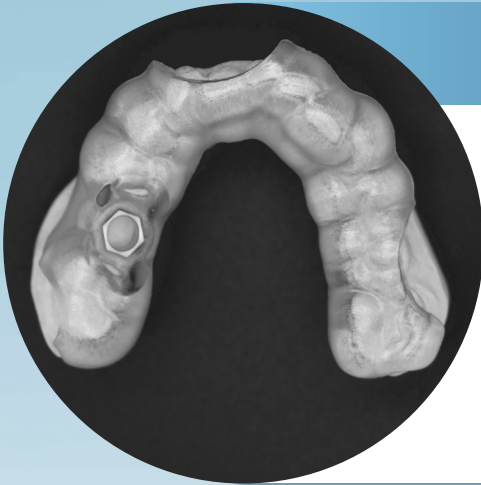


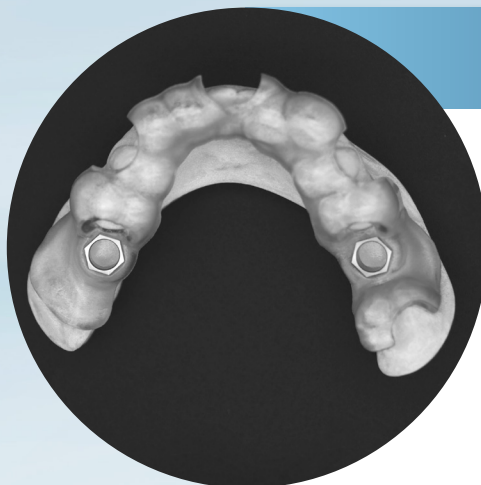
# GUIDED SURGERY PROCEDURE



## Surgical guide - single implant

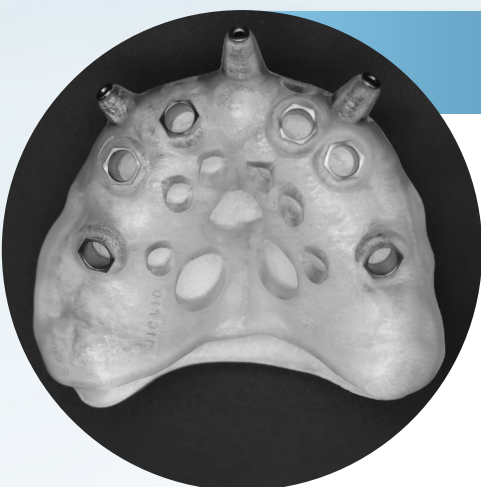
€ 90,00

- ◆ Single implant surgical guide
- ◆ Sleeve compatible with the selected implant line\*
- ◆ White resin model for the guide's fitting (without analog holes)



## Surgical guide - up to three implants € 190,00

- ◆ Up to three implants surgical guide
- ◆ Sleeves compatible with the selected implant line\*
- ◆ White resin model for the guide's fitting (without analog holes)



## Surgical guide - over three implants € 290,00

- ◆ Over three implants surgical guide
- ◆ Sleeves compatible with the selected implant line\*
- ◆ White resin model for the guide's fitting (without analog holes)



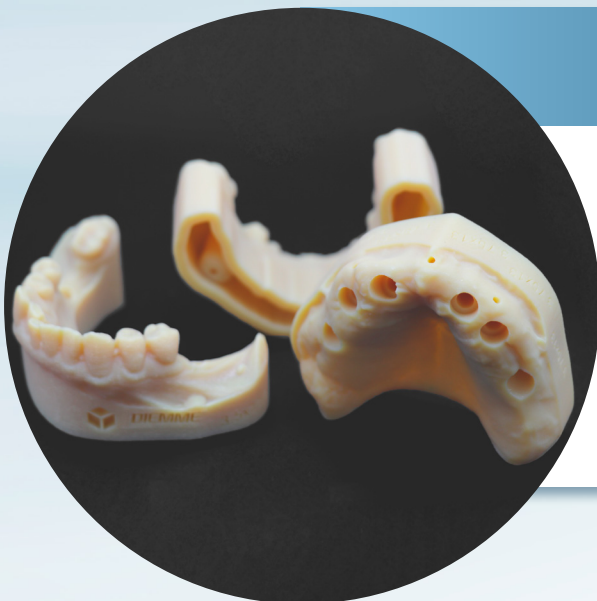
# GUIDED SURGERY PROCEDURE



**Surgical guide - stackable** € 590,00  
 (design and print)

- ◆ Stackable surgical guide
- ◆ Sleeves compatible with the selected implant line\*
- ◆ Models for the guide's fitting ( with analog holes ) - variable depending on the selected modularity

**Surgical guide - stackable** € 290,00  
 (STL files)



**Prototyped model with analog holes** € 50,00

- ◆ Orange resin model with analog holes

According to the customer request, this model replaces the resin model without analog holes. The request must be submitted when sharing the project for production.

## SUPPORTED PROTOCOLS

Teeth, gum, bone or mixed-supported guides.

Stackable or multiple guides to manage post-extractive cases. The first guide to place the pins is teeth-supported; the second guide to use after the teeth extraction is gum-supported.

Surgical guides for antrostomy and apicectomy (contact us for further details about procedure and prices).

Surgical guides are produced according to the RealGUIDE™ guided surgery protocol.

The procedure to match the STL files to the DICOM images and the revision of the final project are free of charge only for customers who possess a RealGUIDE™ PRO license.

Support/Assistance during the surgical planning is not included.



3DIEMME S.r.l.

Via Delle Baraggette 10 | 22060 Figino Serenza (CO) | Italy

Phone +39 031.7073353 | support@3diemme.it | [www.3diemme.it](http://www.3diemme.it)

# GUIDED SURGERY – ADDITIONAL SERVICES

Modeling and Assistance		
3DM00213	Surgical guide STL file, from RealGUIDE™ software project	€ 40,00
3DM00213.1	Surgical guide STL file, starting from RealGUIDE™ software project, including project revision	€ 70,00
3DM00214	Creation of STL file model from RealGUIDE™ project	€ 40,00
3DM00057	RealGUIDE™ software service - RealGUIDE™ Pre-project/ Project review	€ 25,00
3DM00800SW	Online Technical Assistance - software (/h)	€ 100,00

**NEW**

3DM00215	Virtual wax-up (per tooth)	€ 10,00
3DM00222	Temporary full arch design starting from waxup and RealGUIDE™ plan	€ 190,00
3DM00218	Provisional STL file for partial restorations (per tooth)	€ 10,00

All the prices do not include 22% VAT and shipping costs.

\* For the complete list of sleeves and implant lines available please refer to the specific chart on our website [3diemme.it](http://3diemme.it)

\*\*Sleeves cost is not included



# GUIDED SURGERY – ADDITIONAL SERVICES

Print services		
3DM00126I-SLV	Surgical guide 3D print from STL file (+ sleeves gluing**) - lower jaw	€ 50,00
3DM00126S-SLV	Surgical guide 3D print from STLfile (+ sleeves gluing**) - upper jaw	€ 50,00
3DM00126I	Surgical guide 3D print from STL file - lower jaw	€ 50,00
3DM00126S	Surgical guide 3D print from STL file - upper jaw	€ 50,00
3DM00128I	RealGUIDE™ model 3D print from STL file - lower jaw	€ 50,00
3DM00128S	RealGUIDE™ model 3D print from STL file - upper jaw	€ 50,00

All the prices do not include 22% VAT and shipping costs.

\* For the complete list of sleeves and implant lines available please refer to the specific chart on our website [3diemme.it](http://3diemme.it)

\*\*Sleeves cost is not included

